

Universal Airbag seat occupancy sensor emulator

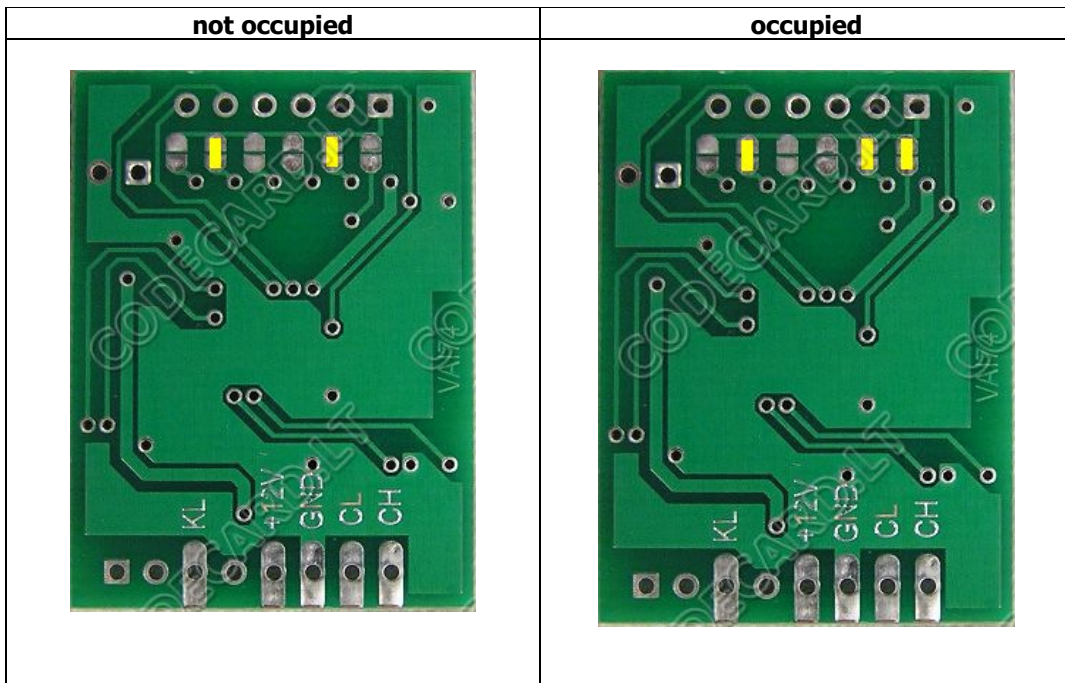
1. Mercedes Benz Seat Occupant sensor emulator - Type1: not included

Can emulate only Mercedes Benz E-class W211, CLS W219 (2004-2007) with BOSCH airbag computers seat occupant sensor. Is possible to set emulator in two states: passenger airbag "ON" or "OFF" (child seat recognized).

not occupied	occupied

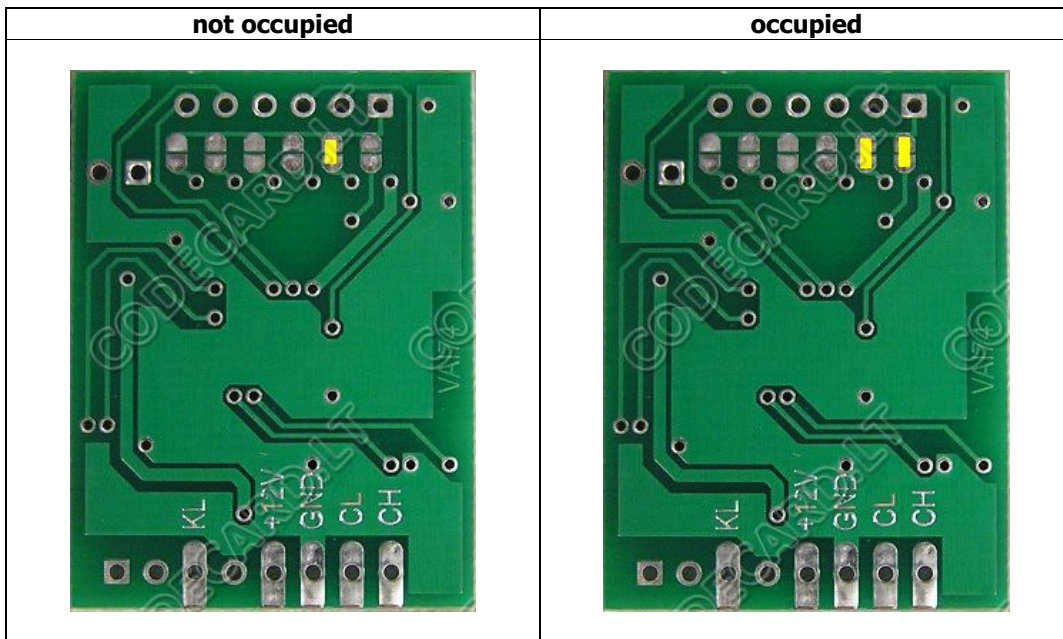
2. Mercedes Benz Seat Occupant sensor emulator - Type2:

Can emulate only Mercedes Benz E-class W211(2002-2004) with TEMIC airbag computers seat occupant sensor. Is possible to set emulator in two states: passenger airbag "ON" or "OFF" (child seat recognized).



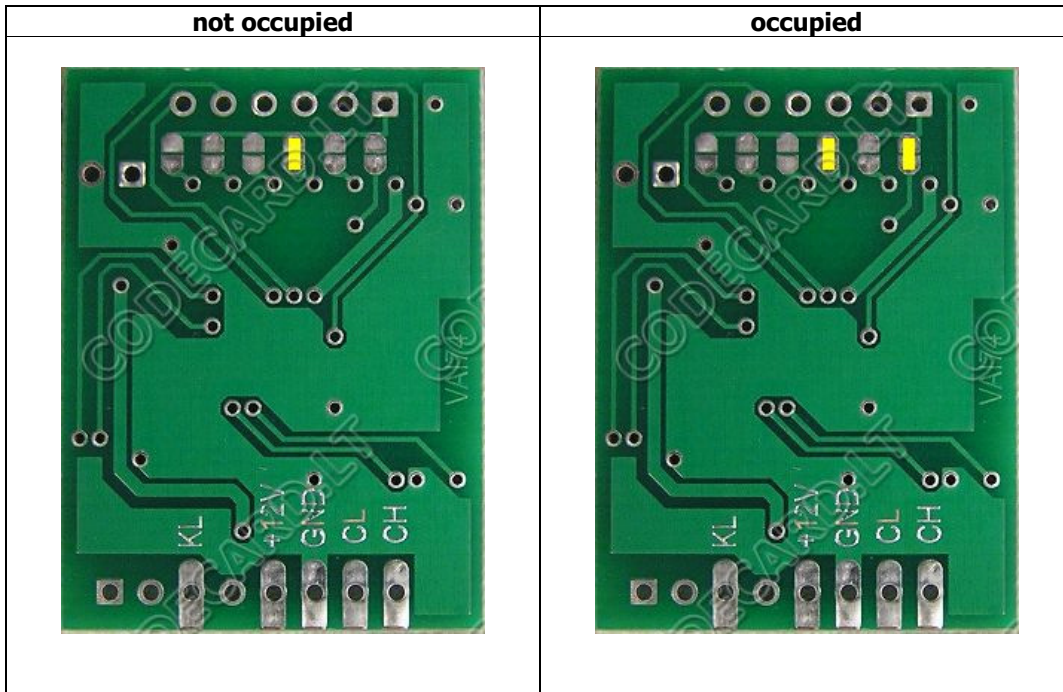
3. Mercedes Benz Seat Occupant sensor emulator - Type3

Can emulate older (year 1997-2001) Mercedes Benz A-class W168, C-class W202, Vito W638, ML (with TRW airbag computer) seat occupant sensor. Is possible to set emulator in two states: passenger airbag "ON" or "OFF" (child seat recognized).



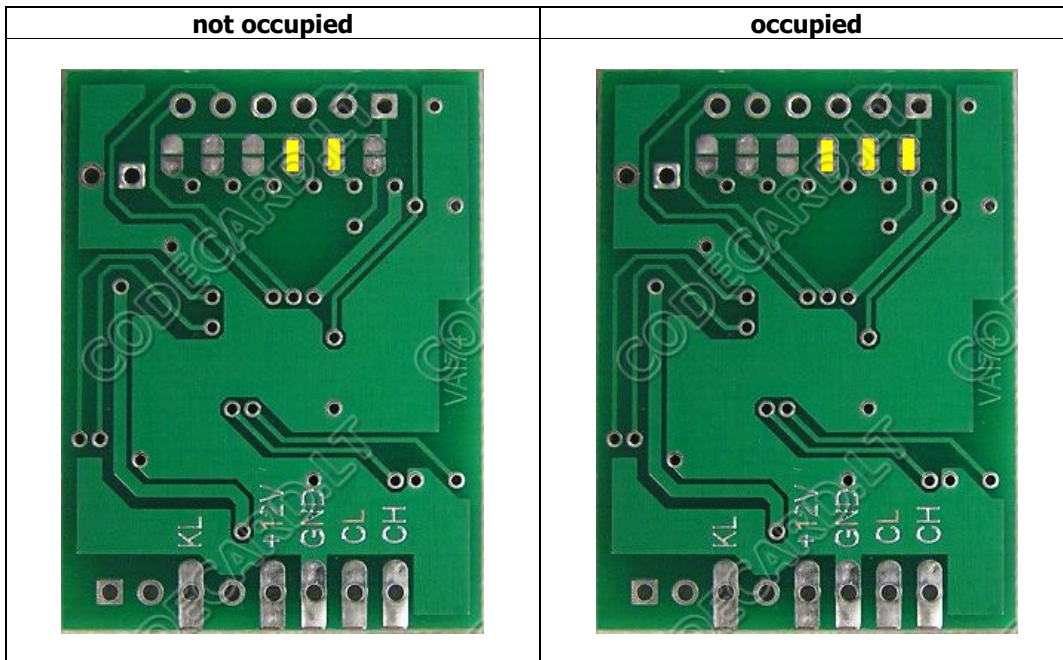
4. Mercedes Benz Seat Occupant sensor emulator - Type4

Can emulate Mercedes Benz (year 2000-20 E-class W210, Vito W639, ML W163, A-class W168, C-class W203, CLK W209, Vaneo seat occupant sensor. Is possible to set emulator in two states: passenger airbag "ON" or "OFF" (child seat recognized).



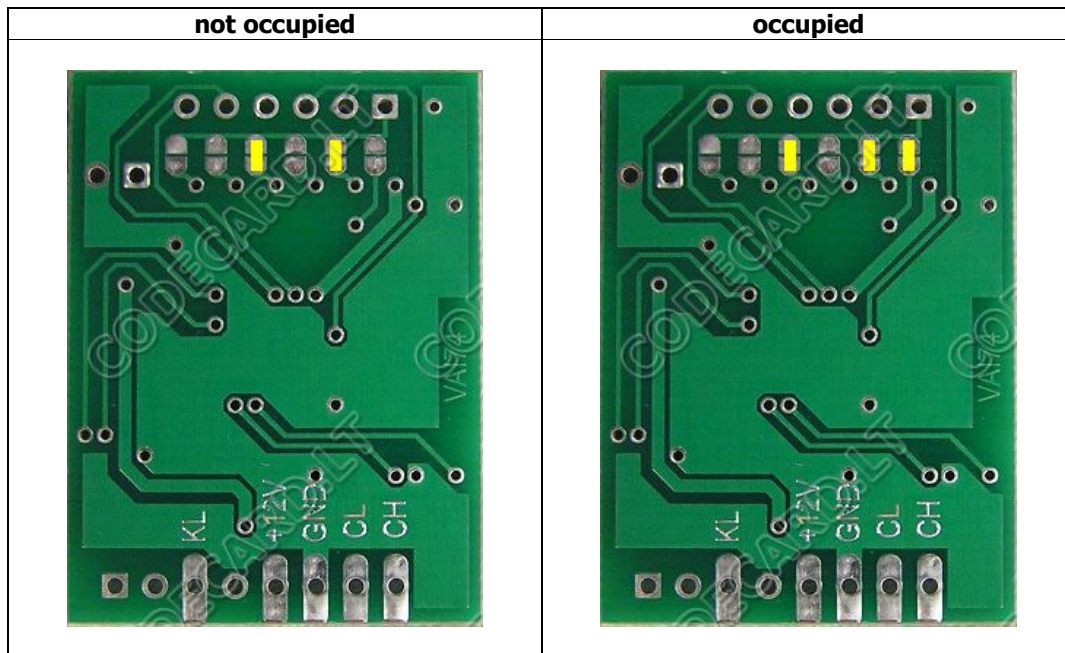
5. Mercedes Benz Seat Occupant sensor emulator – Type5

Can emulate S class W220 2000-2005 seat occupant sensor. Is possible to set emulator in two states: passenger airbag "ON" or "OFF" (child seat recognized).



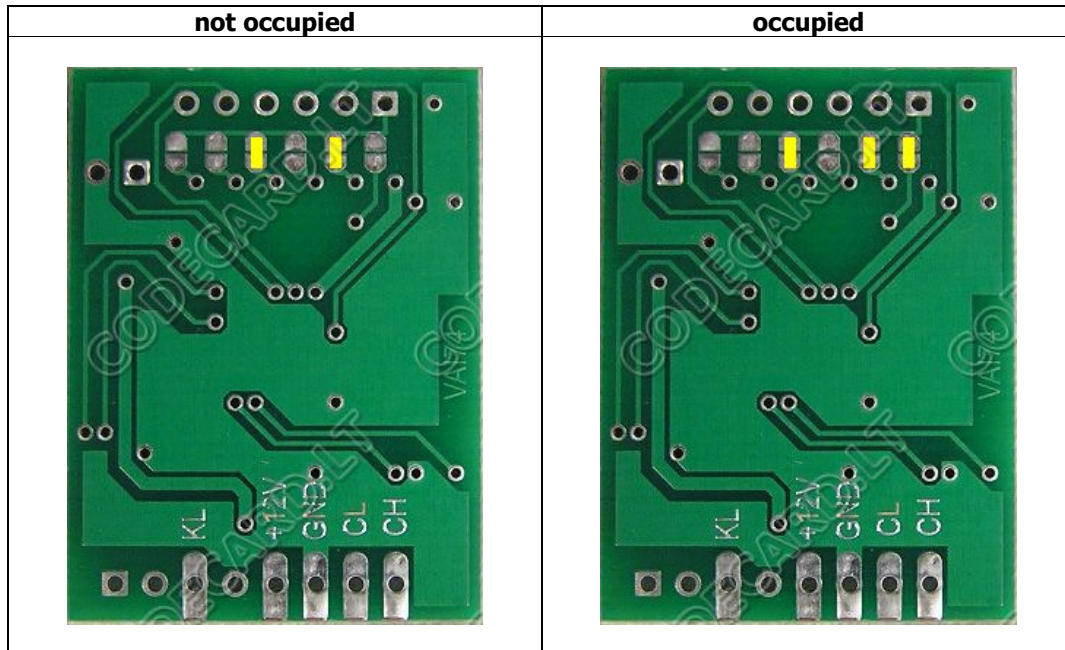
6. BMW E60, E63, E90 (2003-2005) Seat Occupant sensor emulator

BMW E60, E63, E90 (year 2003-2005) Seat Occupant sensor emulator. Works with BMW cars with older type key (with metal blade)

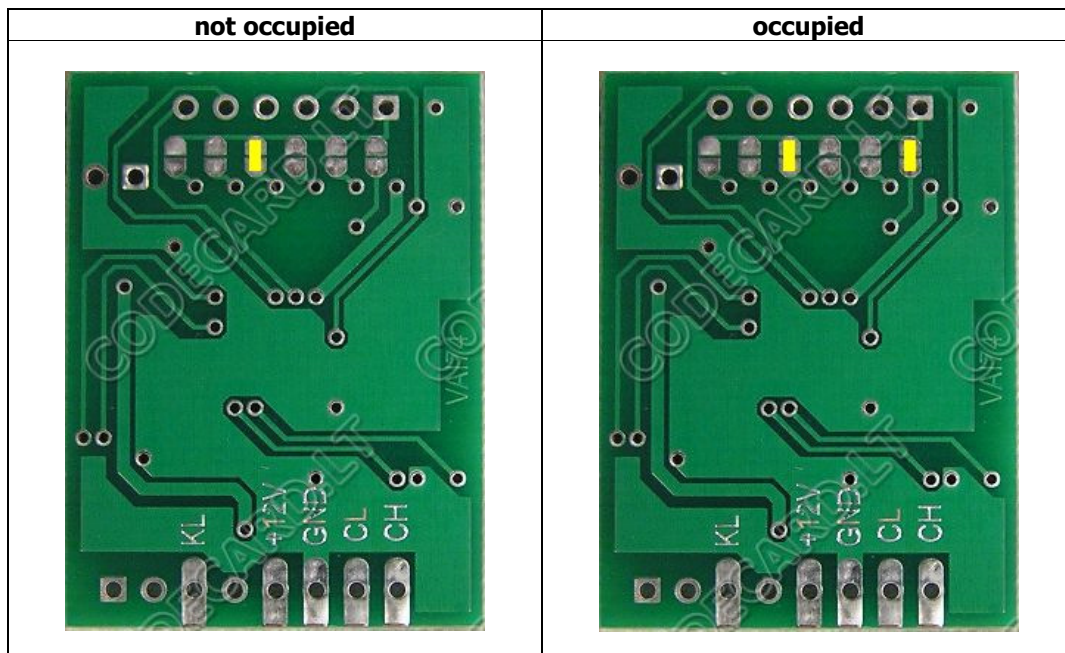


7. BMW E60, E63, E90 (2005-2007) Seat Occupant sensor emulator

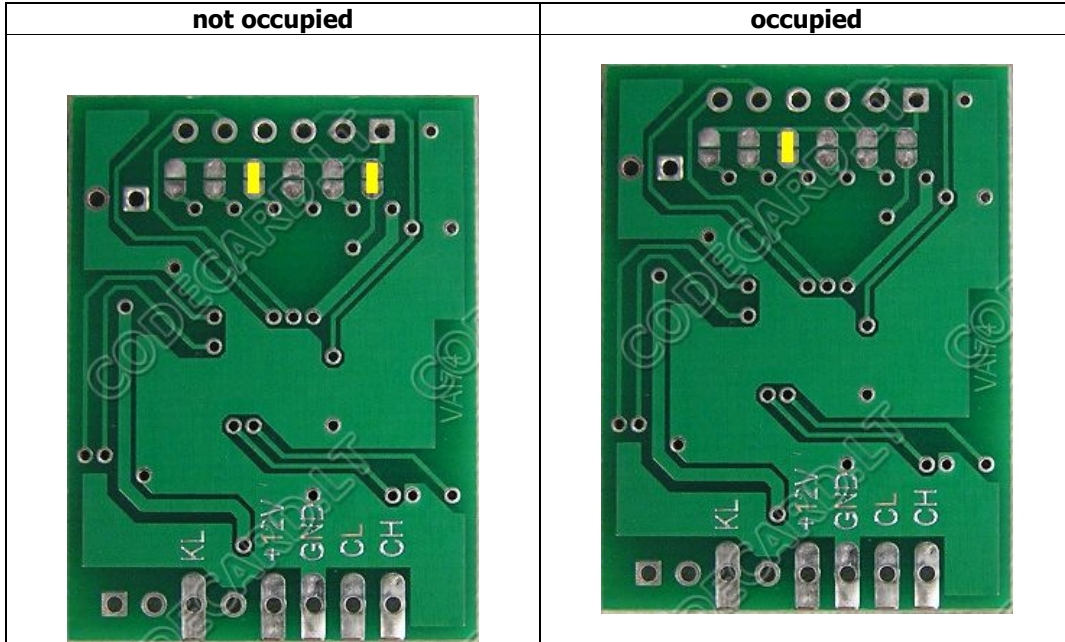
BMW E60, E63, E65, E90, X5 (year 2005-2007) Seat Occupant sensor emulator. Works with BMW cars with new smart key (restyling models).



8. Older BMW E38, E39, E36, E46, X5, X3, E65, E60 and other 1997-2003 BMW seat occupant sensor emulator

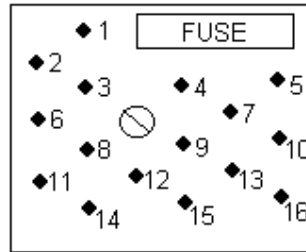


9. **2002-2005 Mini Cooper** seat occupant sensor emulator

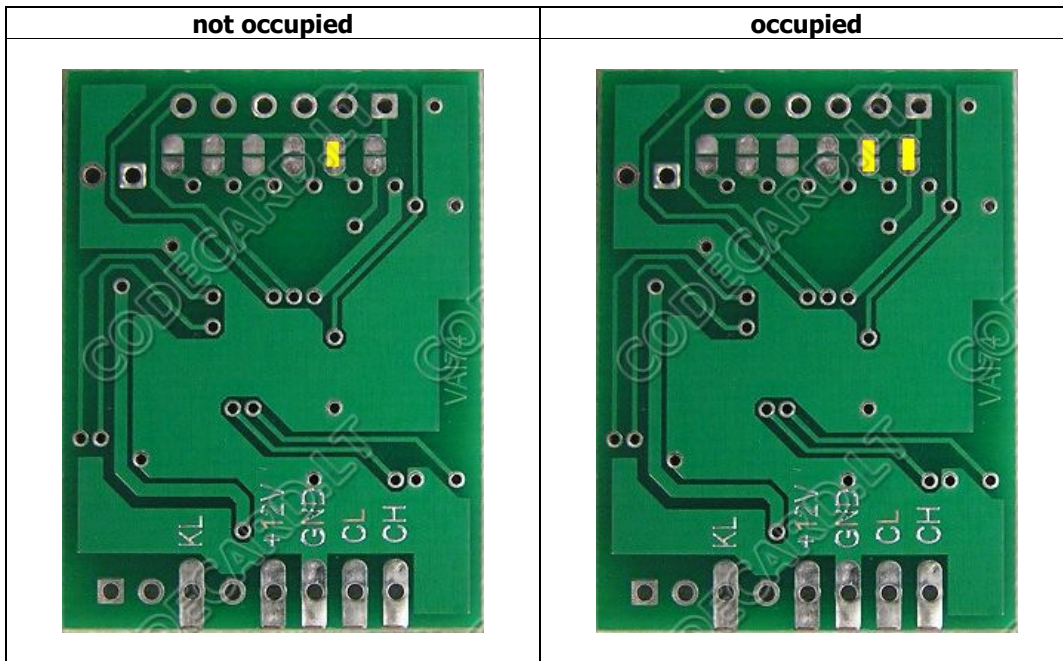


10. **BMW I-bus** emulator for car radio – necessary for BMW car radio and CDC repair.
Remove "DISABLED" message.

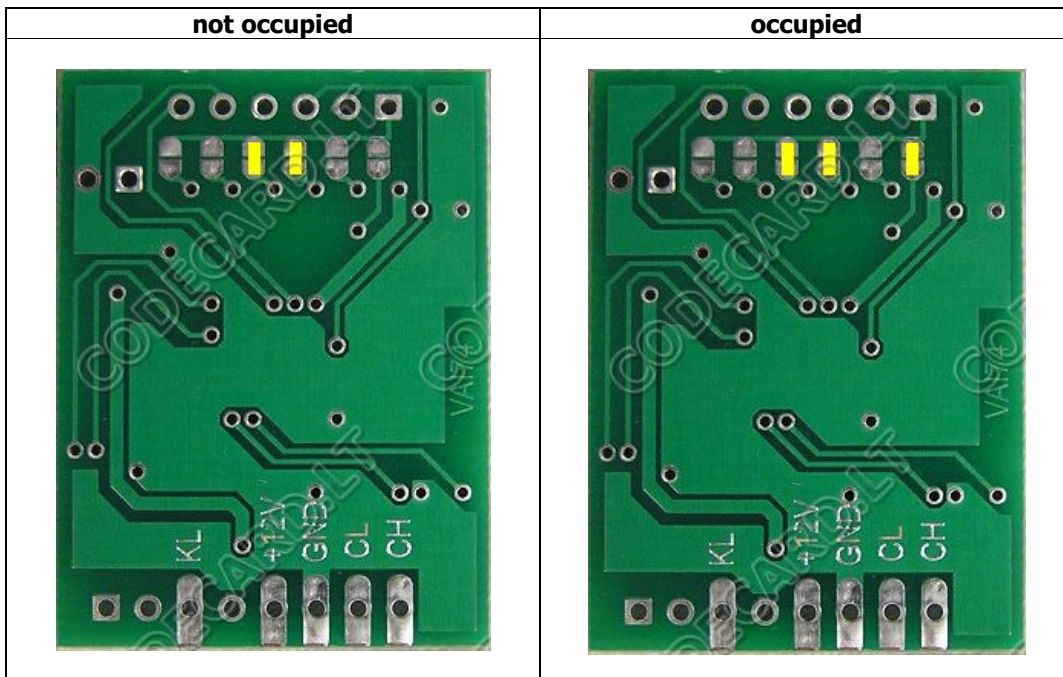
+12V – pin5; To switch "ON" radio need connect +12V also to pin9;
K-line pin need to be connected to radio or CDC I-Bus **pin7;**
GND – pin15;



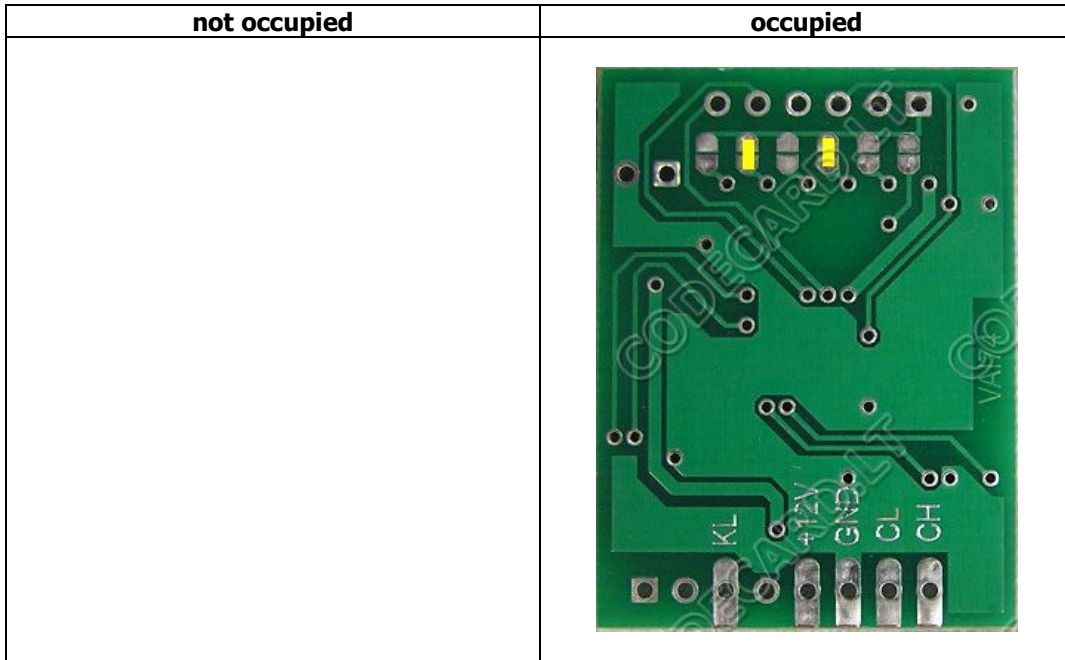
11. **Mazda 6** Seat Occupant sensor emulator:



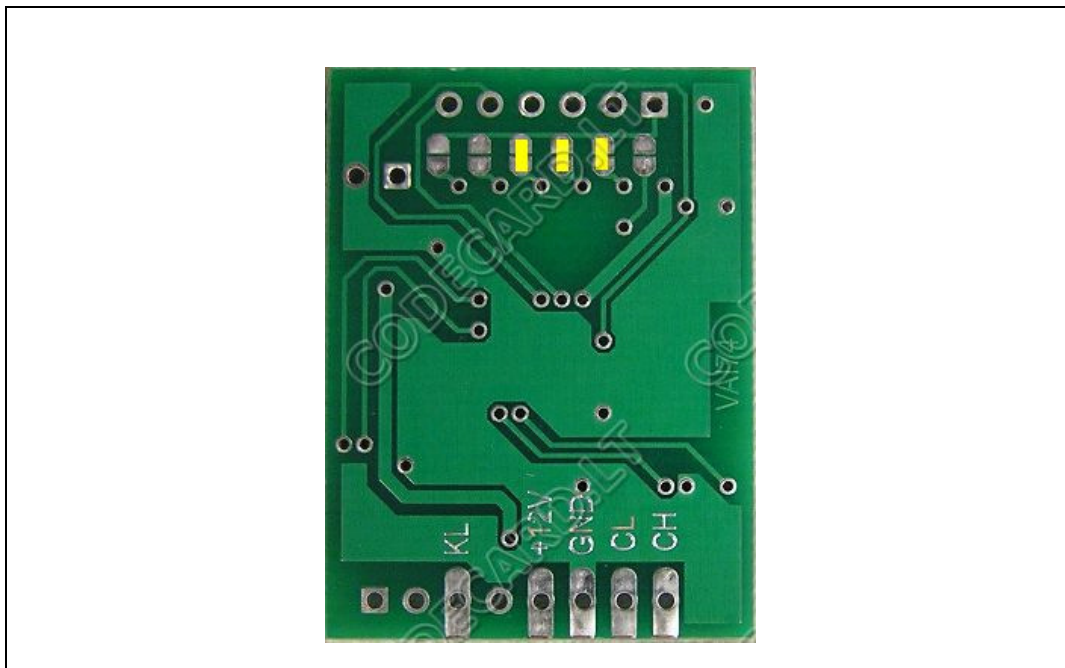
12. **Fiat Stilo** Seat Occupant sensor emulator

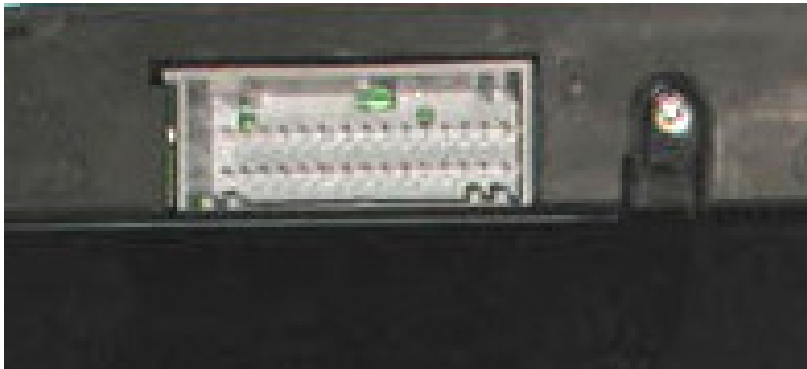


13. **Suzuki Vitara, Grand Vitara, SX4** Seat Occupant sensor emulator



14. **Renault CAN bus emulator for instrument cluster repair**





Renault Scenic wiring:

1 - +12V
2 - GND
30 - CH
29 - CL

Renault Megane wiring:

1 - CH
4 - CL
15 - +12V
30 - GND